

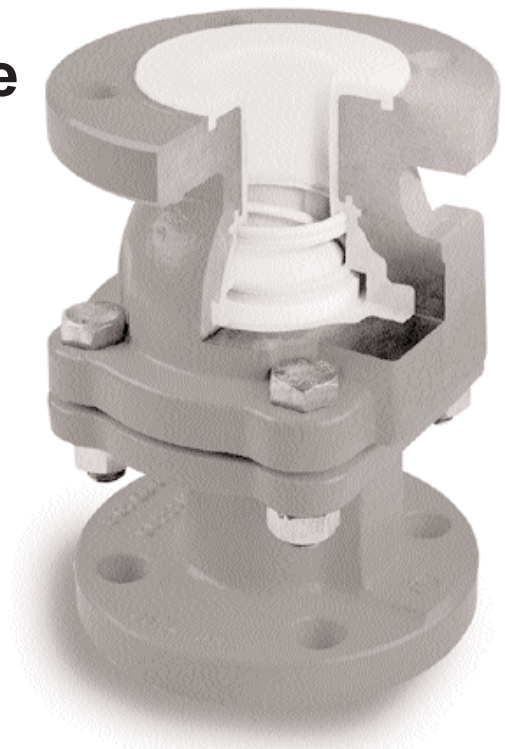
C202 Piston Check Valve

Formerly **073**

Sizes 1/2 through 12 inches, ANSI Class 150

Tufline lined piston check valves feature a spring loaded plug to provide an automatic seal against backflow. It is especially well suited for low pressure applications and can be installed in any orientation.

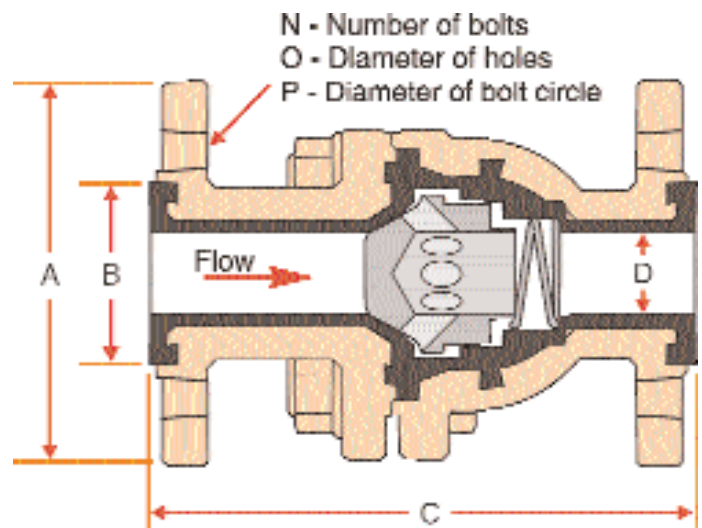
Refer to page 18 for pressure-temperature ratings.



Materials of construction

Body	PFA lined ductile iron
Piston	PTFE
Piston holder	PTFE
Seat ring	PTFE
Spring	PTFE lined stainless steel
Bolting	B7 carbon steel plated

Other lining materials available upon request.



Dimensions (inches)

Size	A	B	C	D	N	O	P	Wt. lbs.	Opening Pressure Horizontal Position PSI	Opening Pressure Vertical Position PSI ↑	Opening Pressure Vertical Position PSI ↓	Cv Values
1/2	3.50	1.57	5.12	0.59	4	0.62	2.36	9	0.54	0.58	0.16	6.20
3/4	3.86	1.97	5.91	0.79	4	0.62	2.72	11	0.54	0.58	0.16	8.66
1	4.25	2.01	6.00	0.91	4	0.62	3.11	11	0.54	0.58	0.16	17.55
1 1/2	5.00	2.87	7.00	1.42	4	0.62	3.86	23	0.70	0.74	0.65	29.84
2	5.98	3.62	8.00	1.85	4	0.75	4.72	29	0.61	0.67	0.55	44.46
3	7.52	4.92	9.50	3.07	4	0.75	5.98	68	0.80	1.04	0.55	101.21
4	9.02	6.18	11.50	3.74	8	0.75	7.50	103	0.80	1.00	0.61	139.46
6	10.98	8.27	14.00	5.71	8	0.88	9.49	189	0.58	0.81	0.35	161.46