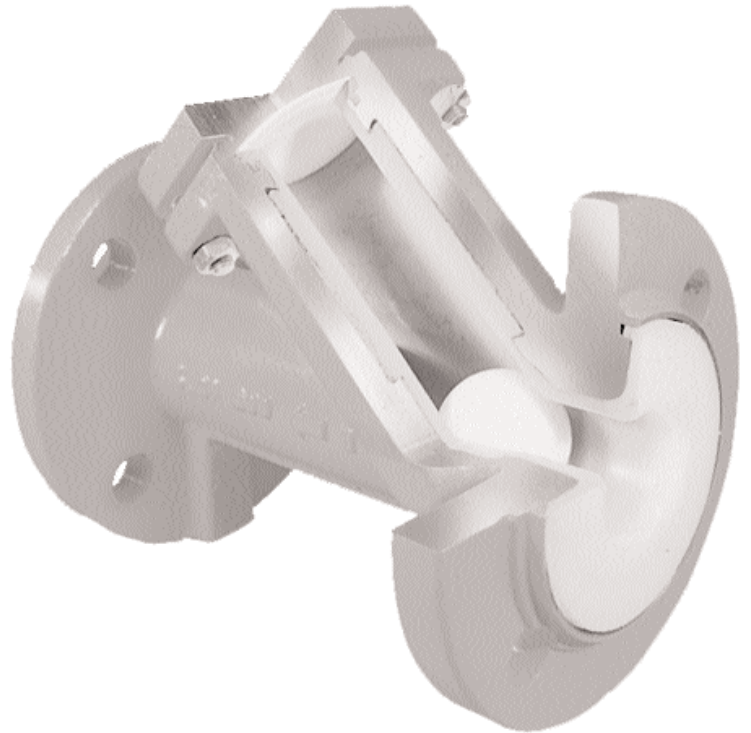


# 071 45° Ball Check Valve

Sizes 1 through 4 inch, ANSI Class 150

The unique construction of the Tuflite 45° ball check valve permits unobstructed flow through the valve as the ball rides in a 45° guide, out of the path of the media. The valve provides a large Cv coefficient. A tight seal against backflow is assured. It can be mounted horizontally or vertically with upward flow.

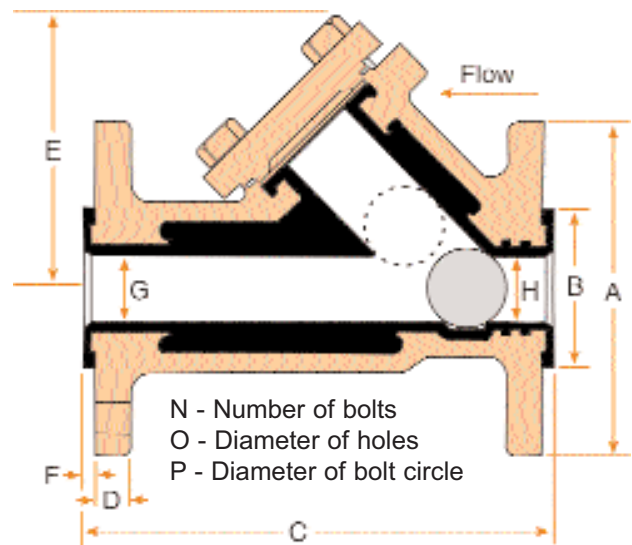
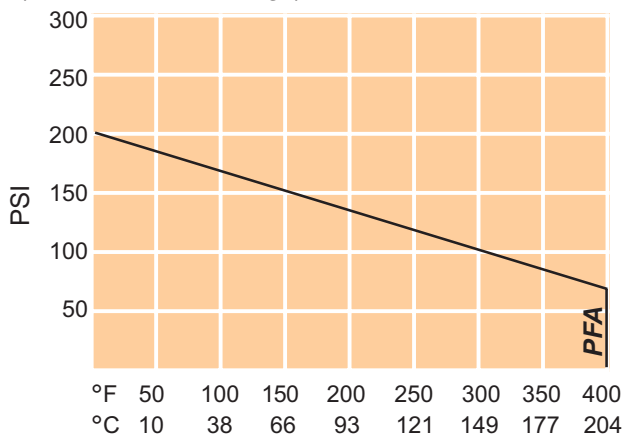


## Materials Of Construction

Body	PFA lined ductile iron
Cover	Ductile iron
Diaphragm	PTFE
Ball	Glass-filled PTFE
Cover bolts	B7 Carbon steel

## Pressure-Temperature Ratings

(Valves with PFA linings)



Maximum allowable  $\Delta P = 200$  psi.

## Cv Factors

Size	1	1½	2	3	4
	23	54	87	222	525

## Dimensions (inches)

Size	A	B	C	D	E	F	G	H	N	O	P	Wt. lbs.	Approximate pressure (psi) to unseat ( $\Delta P$ )		Approximate pressure (psi) to seat ( $\Delta P$ )		Back pressure (psi) to seal ( $\Delta P$ )	Allowable leakage rate @ 80 psi
													Horiz. pipe	Vert. pipe	Horiz. pipe	Vert. pipe		
1	4.25	2.00	6.00	.44	3.50	.13	.88	.78	4	.63	3.13	8	0	Less than 1	10	0	50	30 bubbles/minute
1½	5.00	2.88	7.00	.56	4.00	.13	1.25	1.13	4	.63	3.88	13	0	Less than 1	20	0	50	60 bubbles/minute
2	6.00	3.63	8.69	.63	5.25	.13	1.63	1.63	4	.75	4.75	23	0	Less than 1	30	0	50	60 bubbles/minute
3	7.50	5.00	10.00	.75	6.38	.15	2.50	2.25	4	.75	6.00	42	0	Less than 1	50	0	50	60 bubbles/minute
4	9.00	6.18	13.78	.75	8.86	.27	3.74	3.70	8	.75	9.00	52	0	Less than 1	55	0	50	60 bubbles/minute